

BAUMANN FLEX

Baumann Flex Coupling is the all steel coupling, which consists of the three-layered and multi-spring assembly. It provides the greater flexibility in an all steel coupling.

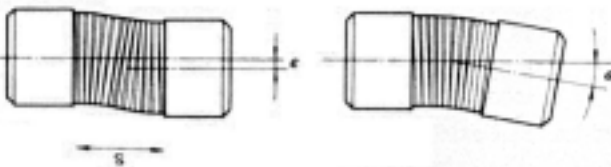
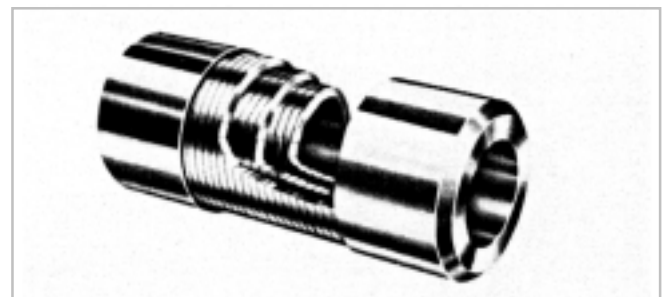
FEATURE

- . Superior flexibility, which permits parallel misalignment of 3% of max diameter and angular misalignment of 3 degree.
- . The design is compact, however, transmits relatively big torque.
- . Superior oil and chemical protection, because of all steel.
- . Free from maintenance

CONSTRUCTION

- . The winding directions of three-layered coil spring are different one by one, therefore, it's independent of the direction of rotation.
- . The three-layered coil spring is firmly brazed to hubs.

MISALIGNMENT CAPACITY



SIZE	6	8	12	14	16	19	20	24	25	28	30	35
MAX PARALLEL MIS.	0.3	0.3	0.4	0.5	0.6	0.7	0.7	0.9	0.9	1.0	1.1	1.2
MAX ANGULAR MIS.	3'	3'	3'	3'	3'	3'	3'	3'	3'	3'	3'	3'
MAX END PLAY	+0.6	+0.8	+1.0	+1.0	+1.2	+1.2	+1.6	+1.6	+2.0	+2.0	+2.5	+3.2

*above values are max permissible misalignment, if the rotation is over 2000rpm recomendable values are less than the half of the above.

*parallel misalignment= ϵ mm, angular misalignment= α 'deg, end play= S mm.

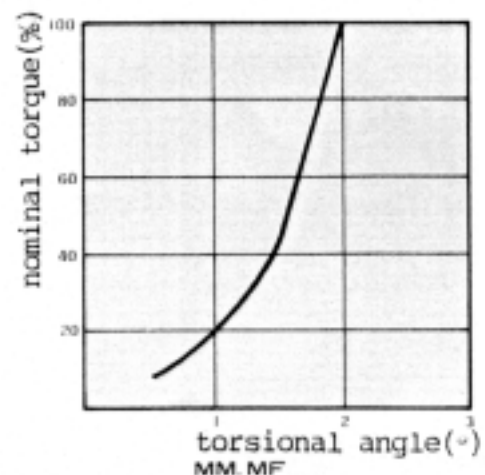
MATERIAL

TYPE	HUB	SPRING
MM	S35C	SWP
MF	S35C	SWP
ZG	Zn	SUP
LW	Al	SUS

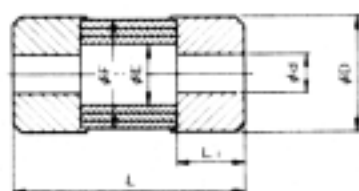
NOTES

- . Operating temperature range is (-)30°C - (+)100°C.
- . When mounting & dismounting, don't put excessive bending or tensing force on coupling.

TORSIONAL STIFFNESS CHARACTERISTIC



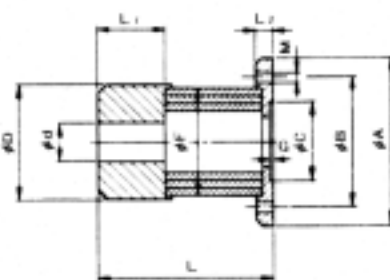
MM-□□□K
サイズ



SIZE	6	8	12	14	16	19	20	24	25	28	30	35
Tn kgfm	0.25	0.5	1	1	2	2	4	4	9	9	15	22
Tk kgfm	0.5	1	2	2	4	4	8	8	18	18	30	44
Nmax 10rpm	20	15	12	10	9	8	7	7	6	6	5	4.5
D	16	21	26	30	35	38	45	48	55	55	65	75
L	20	35	50	50	65	65	80	80	100	100	125	150
L1	6	10	15	15	20	20	25	25	31	31	37	44
E	10.3	11.3	14.8	19.5	20.7	25.5	25.3	31.5	32.3	35.5	37	42
F	15.5	19	24	28	32	36	40	45	50	52	60	70
d	PILOT	2.5	3.5	5.5	7	9	10	11	13	13	15	19
	MAX	8	8	11	14	16	19	20	24	26	29	35
GD ² kgfcm ²	0.03	0.16	0.56	0.97	2.4	3.3	7.8	10.3	22.2	22.6	54.4	118
WEIGHT kg	0.02	0.07	0.14	0.15	0.30	0.32	0.70	0.75	1.25	1.35	2.1	3.5

*dimensions are in metric. Tn-nominal torque Tk-max torque

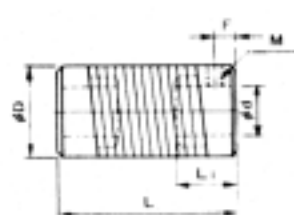
MF-□□□K
サイズ



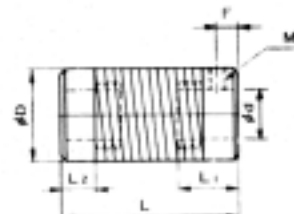
SIZE	8	12	16	20	25	30	35
Tn kgfm	0.5	1	2	4	9	15	22
Tk kgfm	1	2	4	8	18	30	44
Nmax 10rpm	15	12	9	7	6	5	4.5
A	42	48	58	65	75	90	100
B	30	37	47	52	62	74.5	84
CH7	18	22	30	35	42	47	57
D	21	26	35	45	55	65	75
F	19	24	32	40	50	60	70
G	1.5	1.5	1.5	1.5	1.5	2.5	2.5
L	30	40	50	60	75	95	115
L1	10	15	20	25	31	37	44
L2	6	6	6.5	7	8.5	10	13
φM	3-4.8	3-4.8	4-4.8	4-4.8	6-5.8	4-7	6-7
d	PILOT	3.5	5.5	9	11	13	15
	MAX	8	11	16	20	26	30
GD ² kgfcm ²	0.65	1.3	3.6	8.3	20.9	52.9	11
WEIGHT kg	0.10	0.16	0.31	0.5	0.9	1.7	2.8

BAUMANN MINI FLEX

ZG-□□
サイズ



LM-□□
サイズ



TYPE	ZG		LM					
	8	14	6	6-1	9	9-1	14	14-1
Tn kgfcm	5	15	5	5	10	10	20	20
Tk kgfcm	10	30	10	10	20	20	40	40
Nmax rpm	3000	3000	6000	6000	6000	6000	6000	6000
D	16	26	14	14	20	20	26	26
d	PILOT	3	6	4	4	5	5	8
	MAX	8	14	6	6	9	9	14
L	35	50	35	50	40	60	50	70
L1	12.5	17	12	12	14	14	17	17
L2	--	--	6.5	6.5	7.5	7.5	10	10
F	3.5	4.5	3.5	3.5	4	4	5	5
M	M4	M5	M4	M4	M4	M4	M5	M5
MAX MISALIGN	ε	1.0	1.2	1.0	3.0	2.5	4.0	3.0
CAPACITY	α	8	8	8	14	8	14	8
GD ² kgfcm ²	S	±1.0	±1.0	±1.0	±1.5	±1.0	±1.5	±1.0
WEIGHT kg		0.04	0.45	0.02	0.03	0.10	0.12	0.30
		0.03	0.13	0.02	0.03	0.05	0.06	0.09

none set screw is enclosed in an each hub.